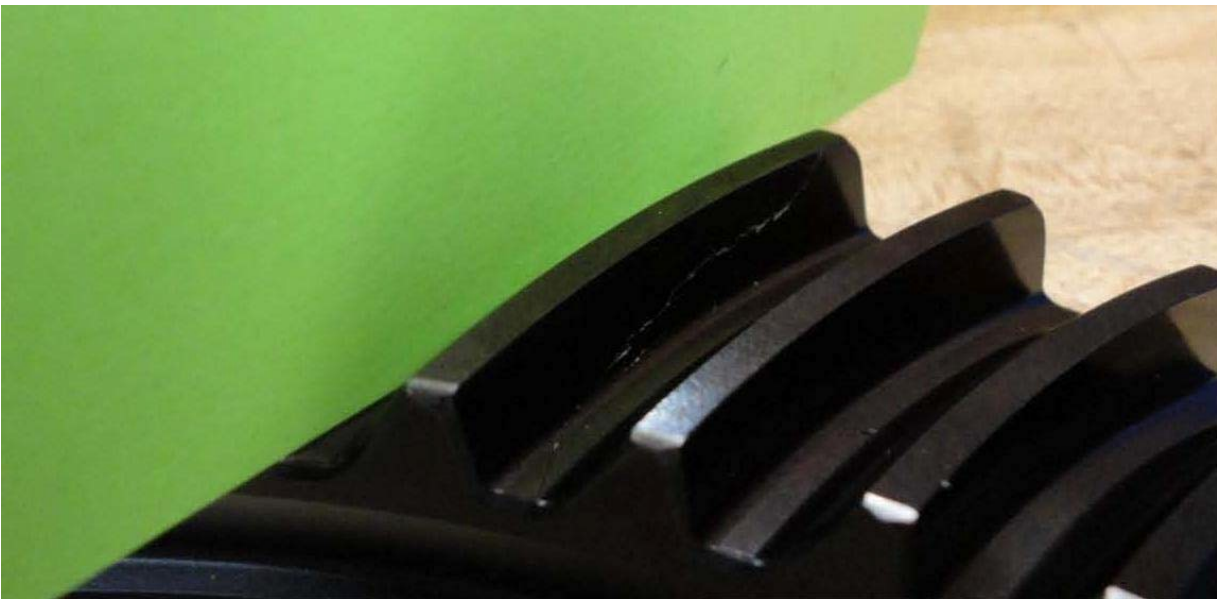


Agusta A119, Cracked Gleason Crown Gear, ATA 6320

A quality control supervisor for this repair facility says, "During a 4800 hour overhaul inspection, the Gleason Crown gear was found to have a crack."



Agusta A119, Cracked Gleason Crown Gear, ATA 6320



Agusta A119, Cracked Gleason Crown Gear, ATA 6320



(Gleason Crown gear P/N: 109040307103; Main Gear Box Component P/N: 109040005103. A second such gear report is found in the SDRS database. Thanks for the photos—Ed.)

Part Total Time: 4,854.0 hours